

# FITTINGS & ACCESSORIES

## TRIPLEX DUCT PLUGS

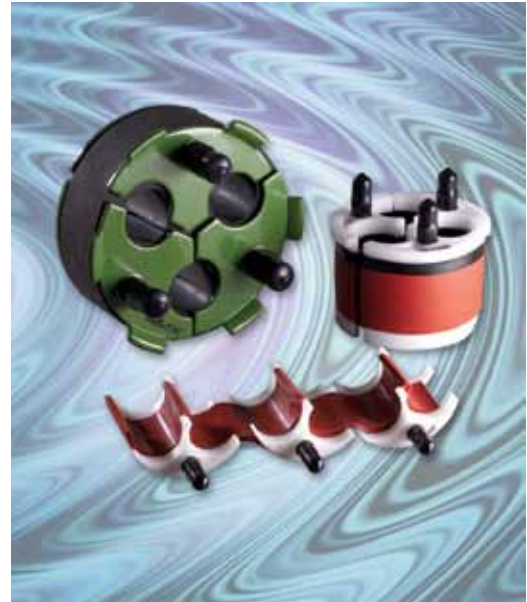
### Multi-Port Sealing Devices for Duct Cable Networks

Triplex duct plugs are split plugs for sealing around, organizing, and supporting up to three subducts, pipes, or cables. The plugs are designed for use in round openings such as conduits, conduit fittings, and core-drilled wall penetrations. Effective long-term water-tight and air-tight seals, these products also prevent mud, backfill, and slurry from entering handholes, manholes, and buildings during the construction process.

The service life of cable, splices, manhole hardware, and electronics can be increased when contact with moisture is reduced. Flooded underground structures are accessed more quickly when they are isolated from the ingress of water, mud, and slurry.

### Triplex Duct Plug Features

- Split design for retrofitting without disassembly
- Anchor and organize subducts or multiple duct systems
- Eliminate duct-edge abrasion to cables
- Expandable gasket allows for expansion and contraction of cables or subducts without leakage
- Excellent for supporting cables at the tops of risers



Part Number	Size	Duct I.D. Range		Cable or Duct O.D. Range	
		inches	mm	inches	mm
21B057SG	2.00	1.97 - 2.13	50.0 - 54.1	0.43 - 0.57	10.9 - 14.5
21B057SGB	2.00	1.97 - 2.13	50.0 - 54.1	0.35 - 0.57	8.9 - 14.5
21B070SGB	2.00	1.97 - 2.13	50.0 - 54.1	0.50 - 0.70	12.7 - 17.8
25B057SG	2.50	2.40 - 2.56	61.0 - 65.0	0.43 - 0.57	10.9 - 14.5
25B057SGB	2.50	2.40 - 2.56	61.0 - 65.0	0.35 - 0.57	8.9 - 14.5
25B070SG	2.50	2.40 - 2.56	61.0 - 65.0	0.62 - 0.70	15.7 - 17.8
25B070SGB	2.50	2.40 - 2.56	61.0 - 65.0	0.50 - 0.70	12.7 - 17.8
25B090SG	2.50	2.40 - 2.56	61.0 - 65.0	0.82 - 0.90	20.8 - 22.9
30B126SG	3.00	3.03 - 3.15	77.0 - 80.0	1.10 - 1.26	27.9 - 32.0
30B136AG	3.00	3.26 - 3.37	82.8 - 85.6	1.22 - 1.36	31.0 - 34.5
35B126S	3.50	3.49 - 3.62	88.6 - 91.9	1.10 - 1.26	27.9 - 32.0
35B136S	3.50	3.49 - 3.62	88.6 - 91.9	1.22 - 1.36	31.0 - 34.5
35B136S-C	3.50	3.49 - 3.62	88.6 - 91.9	1.22 - 1.36	31.0 - 34.5
35B142S	3.50	3.49 - 3.62	88.6 - 91.9	1.30 - 1.42	33.0 - 36.1
35B155HHG	3.50	3.43 - 3.54	87.1 - 89.9	1.38 - 1.54	35.1 - 39.1
36B126SG	3.60	3.70 - 3.81	94.0 - 96.8	1.10 - 1.26	27.9 - 32.0
36B136SG	3.60	3.70 - 3.81	94.0 - 96.8	1.22 - 1.36	31.0 - 34.5
40B122S	4.00	3.94 - 4.13	100.1 - 104.9	1.07 - 1.22	27.2 - 31.0
40B122SG	4.00	3.94 - 4.13	100.1 - 104.9	1.07 - 1.22	27.2 - 31.0
40B136S	4.00	3.94 - 4.13	100.1 - 104.9	1.22 - 1.36	31.0 - 34.5
40B136SG	4.00	3.94 - 4.13	100.1 - 104.9	1.22 - 1.36	31.0 - 34.5
40B136S-C	4.00	3.94 - 4.13	100.1 - 104.9	1.22 - 1.36	31.0 - 34.5
40B142S	4.00	3.94 - 4.13	100.1 - 104.9	1.30 - 1.42	33.0 - 36.1
40B142SG	4.00	3.94 - 4.13	100.1 - 104.9	1.30 - 1.42	33.0 - 36.1
40B150SG	4.00	3.94 - 4.13	100.1 - 104.9	1.36 - 1.50	34.5 - 38.1
40B167SG	4.00	4.09 - 4.29	103.9 - 109.0	1.53 - 1.67	38.9 - 42.4
40B167S	4.00	4.09 - 4.29	103.9 - 109.0	1.53 - 1.67	38.9 - 42.4
40B136AG	4.10	4.16 - 4.29	105.7 - 109.0	1.22 - 1.36	31.0 - 34.5
40B136A	4.10	4.16 - 4.29	105.7 - 109.0	1.22 - 1.36	31.0 - 34.5
40B142AG	4.10	4.16 - 4.29	105.7 - 109.0	1.26 - 1.42	32.0 - 36.1
40B142A	4.10	4.16 - 4.29	105.7 - 109.0	1.26 - 1.42	32.0 - 36.1
40B150A	4.10	4.16 - 4.29	105.7 - 109.0	1.36 - 1.50	34.5 - 38.1
40B150AG	4.10	4.16 - 4.29	105.7 - 109.0	1.36 - 1.50	34.5 - 38.1
40B167A	4.10	4.16 - 4.29	105.7 - 109.0	1.53 - 1.67	38.9 - 42.4

\*Suffix Descriptor  
*S* - Standard PVC and PE ducts (ID)  
*A* - Oversize duct (ID)  
*H* - Undersize ducts (ID)  
*HH* - Undersize ducts and overlap gasket  
*B* - Duct Plugs with inner bushing  
*G* - Duct Plugs with coated metal compression plates  
*#* - Ports with different ID  
*H* - Hole Plug Included

## TRIPLEX DUCT PLUGS CONTINUED

Part Number	Size	Duct I.D. Range		Cable or Duct O.D. Range	
		inches	mm	inches	mm
42B136SG	4.20	4.48 - 4.72	113.8 - 119.9	1.22 - 1.36	31.0 - 34.5
46B167SG	4.60	4.76 - 4.96	121.0 - 126.0	1.53 - 1.67	38.9 - 42.4
50B136HG	4.80	4.88 - 5.10	124.0 - 129.5	1.22 - 1.36	31.0 - 34.5
50B142HG	4.80	4.88 - 5.10	124.0 - 129.5	1.30 - 1.42	33.0 - 36.1
50B150HG	4.80	4.88 - 5.10	124.0 - 129.5	1.36 - 1.50	34.5 - 38.1
50B167HG	4.80	4.88 - 5.10	124.0 - 129.5	1.53 - 1.67	38.9 - 42.4
50B177HG	4.80	4.88 - 5.10	124.0 - 129.5	1.64 - 1.77	41.7 - 45.0
50B192HG	4.80	4.88 - 5.10	124.0 - 129.5	1.77 - 1.92	45.0 - 48.8
50B136SG	5.00	5.04 - 5.35	128.0 - 135.9	1.18 - 1.36	30.0 - 34.5
50B142SG	5.00	5.04 - 5.35	128.0 - 135.9	1.26 - 1.42	32.0 - 36.1
50B150SG	5.00	5.04 - 5.35	128.0 - 135.9	1.36 - 1.50	34.5 - 38.1
50B167SG	5.00	5.04 - 5.35	128.0 - 135.9	1.50 - 1.67	38.1 - 42.4
50B177SG	5.00	5.04 - 5.35	128.0 - 135.9	1.64 - 1.77	41.7 - 45.0
50B192SG	5.00	5.04 - 5.35	128.0 - 135.9	1.73 - 1.92	43.9 - 48.8
60B136HG	5.80	5.82 - 5.98	147.8 - 151.9	1.18 - 1.36	30.0 - 34.5
60B142HG	5.80	5.82 - 5.98	147.8 - 151.9	1.30 - 1.42	33.0 - 36.1
60B150HG	5.80	5.82 - 5.98	147.8 - 151.9	1.36 - 1.50	34.5 - 38.1
60B167HG	5.80	5.82 - 5.98	147.8 - 151.9	1.54 - 1.67	39.1 - 42.4
60B177HG	5.80	5.82 - 5.98	147.8 - 151.9	1.64 - 1.77	41.7 - 45.0
60B192HG	5.80	5.82 - 5.98	147.8 - 151.9	1.81 - 1.92	46.0 - 48.8
60B196HG	5.80	5.82 - 5.98	147.8 - 151.9	1.84 - 1.96	46.7 - 49.8
60B204HG	5.80	5.82 - 5.98	147.8 - 151.9	1.92 - 2.04	48.8 - 51.8
60B220HG	5.80	5.82 - 5.98	147.8 - 151.9	2.08 - 2.20	52.8 - 55.9
60B236HG	5.80	5.82 - 5.98	147.8 - 151.9	1.96 - 2.36	49.8 - 59.9
60B236HGB	5.80	5.82 - 5.98	147.8 - 151.9	1.96 - 2.36	49.8 - 59.9
60B136SG	6.00	6.00 - 6.22	152.4 - 158.0	1.18 - 1.36	30.0 - 34.5
60B142SG	6.00	6.00 - 6.22	152.4 - 158.0	1.26 - 1.42	32.0 - 36.1
60B167SG	6.00	6.00 - 6.22	152.4 - 158.0	1.50 - 1.67	38.1 - 42.4
60B177SG	6.00	6.00 - 6.22	152.4 - 158.0	1.64 - 1.77	41.7 - 45.0
60B192SG	6.00	6.00 - 6.22	152.4 - 158.0	1.73 - 1.92	43.9 - 48.8
60B196SG	6.00	6.00 - 6.22	152.4 - 158.0	1.84 - 1.96	46.7 - 49.8
60B204SG	6.00	6.00 - 6.22	152.4 - 158.0	1.92 - 2.04	48.8 - 51.8
60B217SG	6.00	6.00 - 6.22	152.4 - 158.0	2.05 - 2.17	52.1 - 55.1
60B220SG	6.00	6.00 - 6.22	152.4 - 158.0	2.08 - 2.20	52.8 - 55.9
60B236SG	6.00	6.00 - 6.22	152.4 - 158.0	2.24 - 2.36	56.9 - 59.9
60B236SGB	6.00	6.00 - 6.22	152.4 - 158.0	1.92 - 2.32	48.8 - 58.9
60B244SG	6.00	6.00 - 6.22	152.4 - 158.0	2.33 - 2.44	59.2 - 62.0
60B252SG	6.00	6.00 - 6.22	152.4 - 158.0	2.40 - 2.52	61.0 - 64.0
60B255SG	6.00	6.00 - 6.22	152.4 - 158.0	2.45 - 2.55	62.2 - 64.8
100B346HG	10.00	8.70 - 8.90	221.0 - 226.1	3.23 - 3.39	82.0 - 86.1
100B192S	10.00	9.96 - 10.25	253.0 - 260.4	1.81 - 1.92	46.0 - 48.8
120B396HG	12.00	10.35-10.55	262.9 - 268.0	3.74 - 3.90	95.0 - 99.1
<b>Custom Triplex</b>					
30B090SGB-2	3.00	3.03 - 3.15	77.0 - 80.0	(2x)0.65 - 0.90 (1x)0.57 - 0.70	16.5 - 22.9 14.5 - 17.8
30B132S-1	3.00	3.03 - 3.15	77.0 - 80.0	(2x)1.18 - 1.30 (1x)0.79 - 0.87	30.0 - 33.0 20.1 - 22.1
31T126SB	3.10	3.10 - 3.30	78.7 - 83.8	1.10 - 1.26	27.9 - 32.0
35B118HG-2	3.50	3.49 - 3.62	88.6 - 91.9	(2x)1.42 - 1.55 (1x)1.02 - 1.15	36.1 - 39.4 25.9 - 29.2
35B155HG-1	3.50	3.49 - 3.62	88.6 - 91.9	(1x)1.42 - 1.55 (2x)1.02 - 1.15	36.1 - 39.4 25.9 - 29.2
38T126SGB	3.80	3.78 - 4.09	96.0 - 103.9	1.18 - 1.26	30.0 - 32.0
40T142S	4.00	3.92 - 4.05	99.6 - 102.9	1.31 - 1.42	33.3 - 36.1
40T167S	4.00	4.09 - 4.29	103.9 - 109.0	1.54 - 1.67	39.1 - 42.4
40T167SGB-H	4.00	4.09 - 4.29	103.9 - 109.0	1.54 - 1.67	39.1 - 42.4
40B179SG-1	4.00	3.94 - 4.13	100.1 - 104.9	1.57 - 1.67	40.0 - 42.4
40B190SHG-2	4.00	4.02 - 4.16	102.1 - 105.7	(2x)1.57 - 1.67 (1x)1.81 - 1.91	40.0 - 42.4 46.0 - 48.5
50B260SG-1	5.00	5.04 - 5.35	128.0 - 135.9	(1x)2.40 - 2.56 (2x)0.47 - 0.55	61.0 - 65.0 11.9 - 14.0

\*Suffix Descriptor  
*S* - Standard PVC and PE ducts (ID)  
*A* - Oversize duct (ID)  
*H* - Undersize ducts (ID)  
*HH* - Undersize ducts and overlap gasket  
*B* - Duct Plugs with inner bushing  
*G* - Duct Plugs with coated metal compression plates  
*#* - Ports with different ID  
*H* - Hole Plug Included