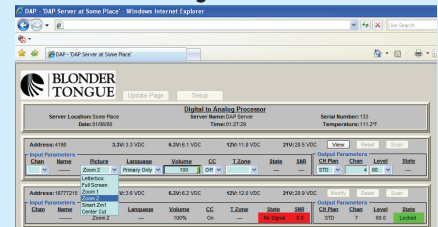




The HDE-ASI Encoder accepts & auto-detects input streams in HD-SDI, SD-SDI, and analog NTSC formats, and delivers one HD/SD MPEG-2 encoded output in ASI format. Additionally, a multi-channel output in DVI format is available for preview and testing purposes. The standard audio program of the digital inputs is encoded in Dolby AC-3 format. Optional Dolby 5.1 is available. Remote monitoring and control is accomplished using any standard Web browser.

Remote Monitoring & Control via Internet



1xHD(1080i)
1xHD(720p) + 2xSD(480i)/NTSC
4xSD(480i)/NTSC



**HD/SD MPEG-2 ENCODING
DOLBY AC-3 AUDIO ENCODING**

ASI

FEATURES

- Three available input modes: 1xHD(1080i), 1xHD(720p)+2xSD/NTSC, and 4xSD/NTSC
- GUI-based monitoring and control menu via Web browser
- Standard real-time Dolby AC-3 audio encoding
- Optional real-time Dolby 5.1 audio encoding
- Multi-channel preview via front-panel DVI interface
- Supports Static PSIP configuration
- Supports Closed Captioning

ORDERING INFORMATION

Model	Stock #	Description
HDE-ASI	6320	HD/SD/NTSC-to-ASI Encoder
HDE-ASI D51	6320 D51	HD/SD/NTSC-to-ASI Encoder with Dolby 5.1 Audio
HDE-OPT-D51	6321	Factory-installed upgrade: Dolby 5.1 Audio add-on
RMAA	5220	4-input unbalanced-to-balanced Audio Amplifier



SPECIFICATIONS

INPUT

Connector:	HD-SDI: 1 x BNC SD-SDI: 4 x BNC NTSC Video: 4 x BNC NTSC Audio: 4 x 8-pin terminal header
Formats:	HD-SDI: SMPTE 292, 1.485 Gbps SD-SDI: SMPTE 259M, 270 Mbps NTSC: Analog Video
Video & Audio	HD-SDI: 720p & 1080i – Embedded PCM Audio SD-SDI: 480i – Embedded PCM Stereo Audio NTSC: 525 lines per frame – Analog Stereo Balanced Audio

OUTPUT

Connectors:	ASI: 1 x BNC (rear-panel) DVI: 1 x DVI Female (front-panel)
ASI	Standard: DVB-ASI; 50083-9 Data Bit Rate: 270 Mbps
DVI	Standard: WUXGA Resolution: 1920x1200 pixels (16:10 Screen)
Encoding Profile	Video: MPEG-2 HD; ISO 13818-2; 1080i MPEG-2 SD; ISO 13818-2; 480i Audio: Dolby AC-3 (Standard) Dolby 5.1 (Optional)

GENERAL

Dimensions (W x D x H):	19.0 x 16.0 x 3.5 inches (483 x 407 x 89 mm)
Power:	Operator Selectable @ 115 VAC/60 Hz or 230 VAC/50 Hz (Fuse: 3.0 amp, 250 VDC, Slo Blo)
Power Dissipation:	99 W (max)
Weight:	15 lbs (6.8 kg)
Operating Temperature:	32 to 122 °F (0 to 50 °C)
Storage Temperature:	-13 to 158 °F (-25 to 70 °C)
Operating Humidity:	0 to 95% RH @ 35 °C max, non-condensation
Storage Humidity:	0 to 95% RH @ 35 °C max, non-condensation

ALARMS/MONITORING/CONTROL

Alarms:	Encoder over-temperature (via front-panel LED)
Local Monitoring:	Encoder fault condition (via front-panel LED) Multi-channel preview (via front-panel DVI interface)
Local Control:	Not Available
Remote Monitoring/Control:	GUI-based menu via Web browser

RELATED PRODUCTS

Model	Description
AQM	1x1 ASI-to-QAM Modulator; Six modulators in 2RU
HDE-QAM	HDMI-to-QAM Encoder; 1RU
DQMx	4x1 ASI or 8VSB/QAM-to-QAM Modulator; 1RU