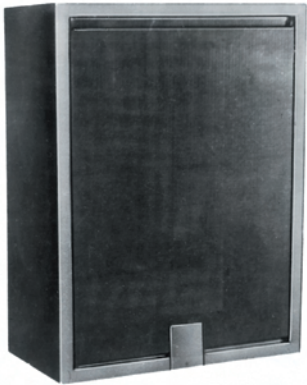


Headend Racks and Panel

Economy Series



BH-1

The BH-1 is a professional quality housing designed for enclosing equipment in an indoor environment. This housing is an indoor, fully ventilated housing with a perforated mounting surface. Keyed slots allow both vertical and horizontal mounting.

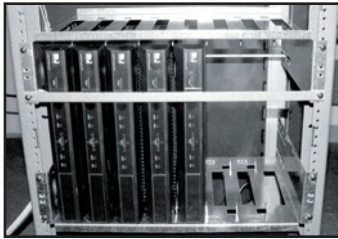
○ Specifications

Dimensions:
 20 x 27 x 10.5 in.
 51 x 69 x 27 cm
 Weight: 18 lbs., 8.18 kg



BPF-19-1V

The BFP Series includes black anodized blank panels used to finish the professional look of a Blonder Tongue headend. These panels have an identical look and finish as standard Blonder Tongue headend products. Three models are available, including: BFP-119 BLK, 1.75"; BFP-319 BLK, 3.50"; and BFP-519, 5.25".



RR-6/8 RX

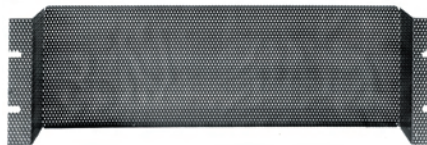
The RR-6/8 RX is a universal 19 inch satellite receiver rack which holds 6 or 8 satellite receivers (model dependent).



Panels



2 RU Shelf



IRH Panel

○ Ordering Information

Model	Stock No.	Description
BFP19-3B	3991B	Blank Front Panel Black, 19" W x 5.25" H (3 Rack Unit High)
BFP19-V	3988	Vented Blank Front Panel Black, 19" W x 1.75" H (1 Rack Unit High)
BFP19-2B	3990B	Blank Front Panel Black, 19" W x 3.50" H (2 Rack Unit High)
BFP19-1B	3989B	Blank Front Panel Black, 19" W x 1.75" H (1 Rack Unit High)
RR-6/8 RX	3932E	Universal 19 inch Satellite Receiver Rack (Holds 6 or 8 Satellite Receivers)
IRH PANEL	3693	Perforated Panel, 19" W x 5.25" H
RS-2U	3995	Rack Shelf (2 Rack Unit High)
BH-1	3507	Indoor Housing, 20" W x 27" H x 10.5" D