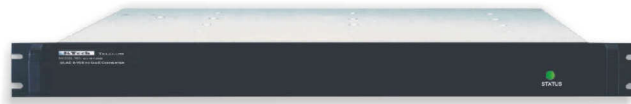


# DVM-3300

## Quad 8-VSB to GigE Converter



### **Performance**

The DVM-3300 is Quad 8-VSB demodulator in 1-RU chassis and generates a GigE output signal. Using 1 F-connector for the RF antenna input port, the unit demodulates to user selectable RF input channels (4CH max), extracts digital MPEG2 transport streams from each of the 4 channels using LG 5<sup>th</sup>-Gen 8VSB demodulator chips, and generates MPEG2 over IP signal on GigE output on an SFP connector.

### **Transport Stream Output**

The MPEG2 Transport Stream output is provided through a GigE output port using an SFP connector. This port contains the individual MPTSs demodulated by each of the 4 RF channels. Thus, the GigE signal contains a maximum of 4 MPTSs.

### **8VSB RF Demodulation**

Using LG 5<sup>th</sup>-Gen demodulator IC, the unit is able to tune to any VHF/UHF off-air digital channels for 8VSB. It is also possible to set up the unit to demodulate 64/256QAM cable channels as well.

### **User Interface**

All settings and controls can be viewed and set using an 10/100BaseT control port. An RS232 port is also available for a basic installation.

### **Applications**

- GigE Transport
- MPEG2 over IP

**General Specifications (all specifications are preliminary and subject to change)**

<b>AC Power</b>		<b>Weight</b>	
<b>Frequency</b>	47-63 Hz	<b>Net</b>	12 lbs
<b>Voltage</b>	90-264 VAC	<b>Gross</b>	15 lbs
<b>Current</b>	1.2 A (max)	<b>Front Panel Display</b>	Power ON LED
<b>Fuse</b>	1.5A, 250V		
<b>Operating Conditions</b>		<b>User Interface</b>	
<b>Temperature</b>	0° - 55°C	<b>Local</b>	RS232
<b>Altitude</b>	12,000 ft.	<b>Remote</b>	10/100BaseT RJ45
<b>Humidity</b>	95% non-condensing		
<b>Cooling</b>	None	<b>Rack Space</b>	1U
<b>Dimensions</b>			
<b>Height</b>	1.75"		
<b>Width</b>	19"		
<b>Depth</b>	12"		

**RF Input**

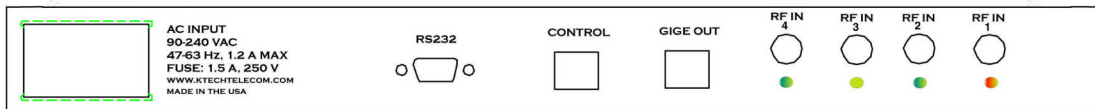
<b>Source Impedance</b>	75 ohms	<b>TS Bit Rate</b>	19.39265 Mbps +/- 2.8ppm
<b>Input Coupling</b>	AC	<b>Mod Format</b>	8VSB/QAM
<b>Channel Range</b>	VHF~UHF (CH2~69)	<b>Connector</b>	F - Jack

**GigE Output**

<b>Format</b>	MPEG-2 over IP service (UDP based)	<b>Spec</b>	IEEE 802.3z draft D5.0 1000BASE-SX Gigabit Ethernet
<b>Configuration</b>	Configure for IP address, subnet mask, and UDP port number.	<b>Connector</b>	SFP – Copper Typical

**RS232 Specifications**

<b>Baud Rate</b>	9600, 8 data bits, no parity, 1 stop bit
<b>Connector</b>	DSUB 9, female
<b>Download Capability</b>	Firmware Upgrades
<b>Software</b>	Windows Hyperterminal



**Ordering Information**

Part Number	Description
DVM-3300	QUAD 8-VSB to GigE Converter