

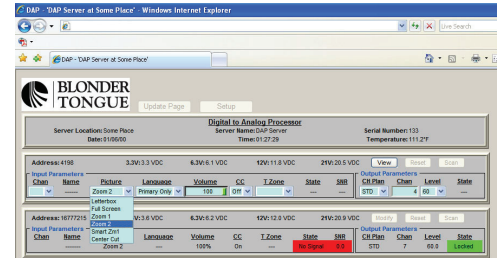
AQD (ATSC/QAM Demodulator) accepts one input in 8VSB (digital off-air) or QAM (digital cable) format, and delivers one output in NTSC composite analog Audio/Video format, and two identical outputs in ASI format.

AQD allows delivering of a digital off-air program to viewers with an analog TV set. It also allows an operator to cherry-pick channels from a "clear" QAM cable lineup.

AQD PLUS is the same as AQD, but includes the **AFD** broadcast package. AFD (Active Format Description) is a standard set of codes embedded in the video stream and used by digital television broadcasters to optimally display a 16:9 video format on an analog television set designed for 4:3 video format.



### Remote Monitoring & Control via AQD-RCS



**8VSB OR QAM**



**Composite  
Analog A/V**

**2 x ASI**  
(AQD PLUS ASI only)

## FEATURES

- Input standards supported are digital off-air (8VSB) and digital cable (QAM 64 and 256)
- NTSC Composite Analog Audio/Video output is in 480i format and supports Closed Captioning (EIA-608)
- Optional AQD-RCS module allows remote monitoring and configuration of up to 80 AQD modules
- Optional AQD-SPS unit provides standby utility power to the primary power supply (AQD Power & Control module)

## ORDERING INFORMATION

Model	Stock #	Description
AQD	6245	ATSC/QAM Demodulator
AQD PLUS	6244	AQD with AFD Broadcast Package
AQD PLUS ASI	6244-10	AQD PLUS with 2xASI outputs
AQD-PCM	6246	AQD Power & Control Module
QTRC	6233	QAM Transcoder Rack Chassis
<b>Options</b>		
AQD-RCS	2730	AQD Remote Configuration Server Module
AQD/AQT-SPS	6253	AQD/AQT Standby Power Supply
QTHF	6235	QT Headend Fan



# SPECIFICATIONS

## INPUT

<b>Connector:</b>	"F" Female
<b>Standards</b> <b>8VSB:</b> <b>QAM:</b>	ATSC Digital Television A/53E (8VSB) TU-T J.83; Annex B (64 and 256 QAM)
<b>8VSB Mode</b> <b>Tuning Range:</b> <b>Data Rate:</b> <b>Bandwidth:</b> <b>Power Level:</b>	VHF (NTSC Ch. 2-13), UHF (NTSC Ch. 14-69) 19.392 Mbps 6 MHz -20 to +20 dBmV
<b>QAM Mode</b> <b>Tuning Range:</b> <b>Data Rate:</b> <b>Bandwidth:</b> <b>Power Level:</b>	CATV (NTSC Ch. 2-135) 38.8 Mbps (QAM 256); 26.97 Mbps (QAM 64) – Auto Detect 6 MHz -20 to +20 dBmV
<b>Impedance:</b>	75 Ω

## OUTPUT

<b>Connector</b> <b>Video:</b> <b>Audio:</b>	"F" Female RCA; Left & Right
<b>NTSC Composite Video</b> <b>Level:</b> <b>Format:</b> <b>Aspect Ratio:</b> <b>Closed Captioning:</b>	1 Volt Peak-to-Peak 480i 4:3 EIA-608
<b>ASI Output (AQD PLUS ASI ONLY)</b> <b>Standard:</b> <b>No. of Streams:</b> <b>Data Bit Rate:</b> <b>Transport Stream Rate:</b> <b>Output Impedance:</b>	DVB-ASI; 50083-9 Two identical streams 270 Mbps 160 Mbps (Max) 75 Ω
<b>L/R Analog Audio</b> <b>Level:</b> <b>Control:</b>	1 Volt Peak-to-Peak (@ -20 dBFs as input) Adjustable

## GENERAL

<b>Dimensions (W x D x H)</b> <b>AQD/AQD-RCS Module:</b> <b>AQD-PCM Module:</b> <b>QTRC Chassis:</b>	1.5 x 11.31 x 5.25 inches (38 x 287 x 133 mm) 4.5 x 10.625 x 5.25 inches (114 x 270 x 133 mm) 19 x 12.0 x 5.25 inches (483 x 305 x 133 mm)
<b>Power:</b>	110 VAC/60 Hz (Fuse:1 A, 250 VDC, SloBlo)
<b>Power Dissipation:</b>	10 W (per AQD module)
<b>Weight</b> <b>AQD/AQD-RCS Module:</b> <b>Fully Loaded Chassis:</b>	1.5 lbs (0.68 kg) 24 lbs (10.9 kg)
<b>Operating Temperature:</b>	32 to 122 °F (0 to 50 °C)
<b>Storage Temperature:</b>	-13 to 158 °F (-25 to 70 °C)
<b>Operating Humidity:</b>	0 to 95% RH @ 35 °C max, non-condensation
<b>Storage Humidity:</b>	0 to 95% RH @ 35 °C max, non-condensation

## ALARMS/MONITORING/CONTROL

<b>Indicators</b> <b>AQD Module:</b> <b>AQD-RCS Module:</b>	Lock (Green LED) Link/Transmit/Receive (3 x Green LEDs)
<b>Local Monitoring:</b> <b>Local Control:</b>	Front-panel 16-character, 2-line LCD screen Front-panel Navigational Key-pad
<b>Remote Monitoring/Control:</b>	GUI-based menu via Web browser (Available if the optional AQD-RCS module is installed)

## RELATED PRODUCTS

Model	Description
AQM	ASI-to-QAM Modulator; Six modulators in 2RU
AQT	8VSB/QAM-to-QAM Transcoder; Eight transcoders in 3RU
DQMx	4x1 ASI and 8VSB/QAM-to-QAM Multiplexer; 1RU