

MPEG-2 Transport Stream Analyzer

# T-SCOPE



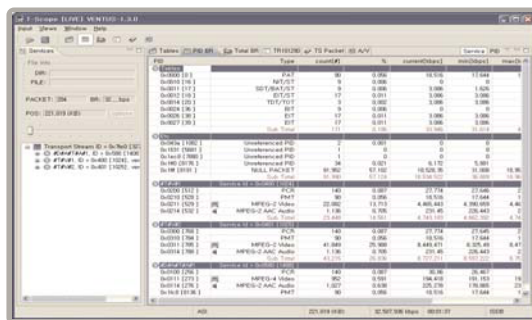
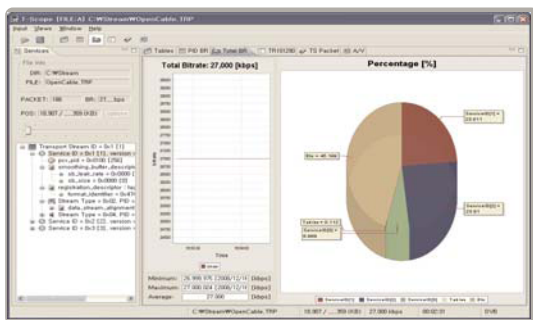
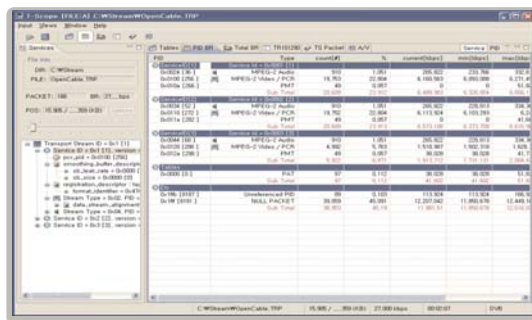
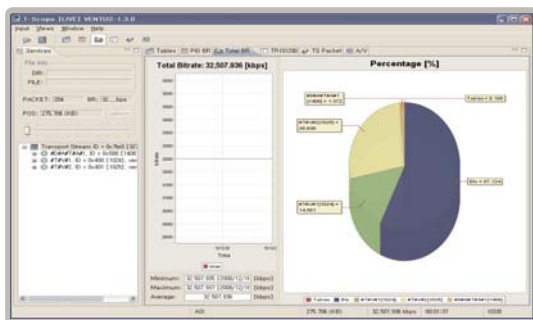
1/6

***High Performance MPEG-2 TS Analyzing Solution  
without the high price tag!***



## Key Features

- ATSC, DVB-C, DVB-S, DVB-T and OpenCable DTV standards compliant.
- Multiple physical layer interface.
- ETSI TR 101 290 Priority with real-time 3-stage error monitoring reporting and error logging.
- Diagnostic and verification of MPEG designs.
- PCR & PTS analysis, arrive time graphing, measurement display and jitter analysis.
- Triggered recording.
- Data rate analysis.
- Table and packet views.
- SI/PSI & PSIP view and interval analysis.
- CAS view: ECM and EMM repetition rate and update time.
- PES header analysis.
- Real-time A/V decoding.



A MPEG-2 Transport Stream analyzer for real-time analyzing, monitoring and decoding for VENTUS 1.0. The T-SCOPE is compatible with ATSC, DVB-C, DVB-S, DVB-T and OpenCable modulations. T-SCOPE is the best solution for OEM manufacturers who seek the best of the best for designing and verifying digital TV equipment.



# VENTUS-A

## DVB-ASI Input and Output Adapter for USB

### Features

- Single DVB-ASI input and single DVB-ASI output adapter for USB(half duplex)
- Packet size conversion support: 188 bytes to 204 bytes, 204 bytes to 188 bytes
- Null packet removal and insertion support
- PCR re-stamping support
- Hardware based input rated monitoring
- 8Mbytes hardware buffer reduce host CPU processing jitter
- Efficient USB DMA transfer reduces host CPU processing time
- Free SDK(API library and example application source codes) and drivers for Windows
- Same API and driver with VENTUS-1.0, DTV signal generator.
- MPEG2 TS play and capture with T-Pump software
- MPEG2 TS analysis and capture with T-Scope software

### Specification

- USB: USB 2.0, bus powered, no power supply required
- ASI input connector: 75Ω BNC, 1ea
- ASI output connector: 75Ω BNC, 1ea
- Output bit-rate: 0~108Mbps (in 1bps step)
- Input bit-rate: 0~216Mbps
- Output/Input modes: 188/204 bytes packet mode
- OS support: Windows 7, XP, 2000

### Applications

- PC based MPEG2 TS recorder, analyzer
- PC based decoder
- PSI/PSIP Generator
- IP-to-DVB and DVB-to-IP gateway
- Advertisement inserter

