

# MTX Frames and Accessories

An Evolant® Solutions Product

Corning  
Cable Systems

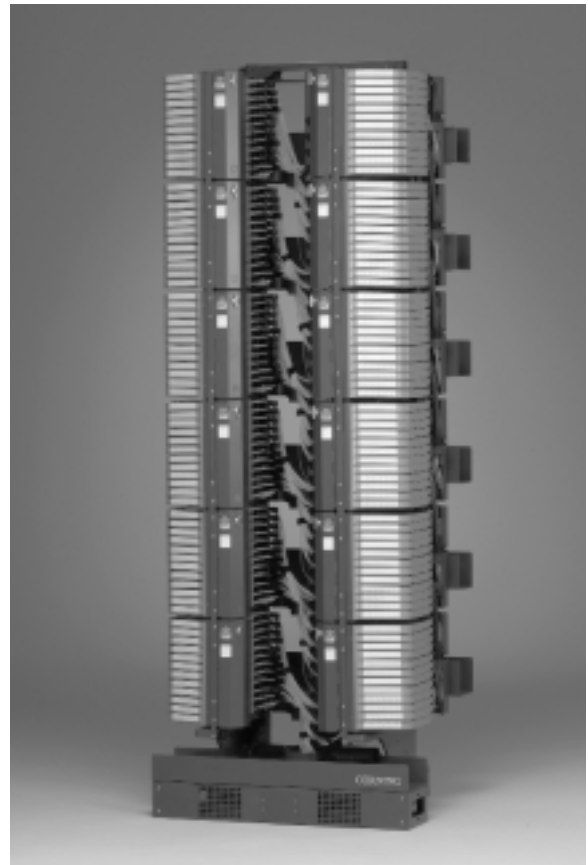
## Description

With an industry-leading 1728-fiber capacity using SC connectors, the Corning Cable Systems Mass Termination Xchange (MTX) frame offers ultra-high termination density, easy termination access and superb jumper management in a minimal footprint. It provides flexible cable entry, cable type and connector options. Additionally, discrete connector access limits disturbance to adjacent connections, making the MTX ideal for high-speed networks. The MTX has been designed and tested for GR-63 NEBS and Telcordia GR-449 high-density frame compliance to assure that this quality product will meet today's and tomorrow's demands for density, fiber management and system integrity.

Inter-bay jumper slack is controlled with the use of an isolated center-mounted slack bay. Intrabay routing is accomplished across the bottom routing trough or in any one of six rear-routing troughs.

## Features / Benefits

- 1728-fiber capacity with SC connector (other small-form-factor connector types are available)
- 84 x 30 x 24 in (H x W x D)
- Wide central jumper access zone
- Integrated intrabay slack management
- 1.5-in bend radius throughout
- Top or bottom cable entry
- Individual 12-fiber access
- Optional rear routing troughs
- Lower jumper trough – standard
- Modules and module chassis available
  - Preconnectorized cable stubs
  - With adapters
- Accommodates typical legacy equipment products such as LGX® compatible-type housings or rack-mounted electronics
- Designed and tested for NEBS GR-63 and Telcordia GR-449 compliances



MTX Full Frame | Photo ICH281

## Ordering Information

### Frames

Corning Cable Systems offers two types of frames for the MTX, as well as a host of frame accessories. All frames are sold fully assembled with 3.0-in diameter central routing and storage spools installed.

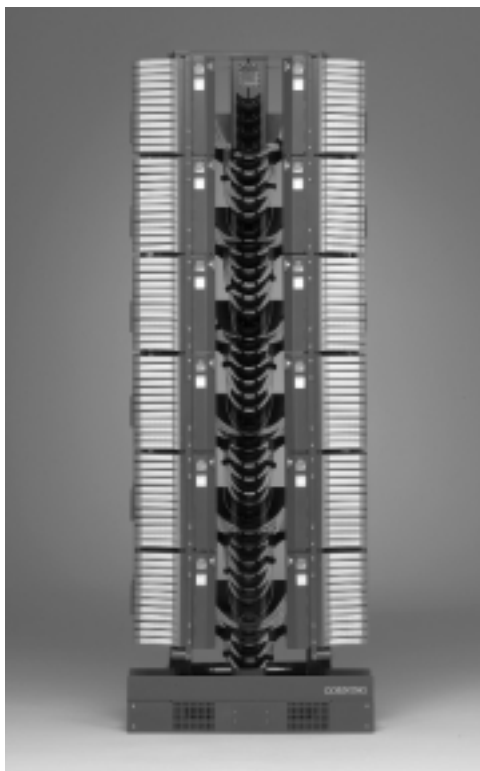
Part Number	Description	Dimensions (H x W x D) cm (in)	Shipping Weight kg (lb)	Color
MTX-ER-7	Standard Usage Frames (rear troughs not included)	213.3 x 76.2 x 61 (84 x 30 x 24)	113 (250)	Gunmetal gray
MTX-ER-7-T	Standard Usage Frames with complete rear trough kit (troughs not installed)	213.3 x 76.2 x 61 (84 x 30 x 24)	113 (250)	Gunmetal gray

### Frame Extensions

Used to secure primary frame structure to overhead ladder rack system. Ladder rack interface hardware not included.

Part Number	Description	Color
MTX-ER-EXT-7-9	2 ft Frame Extension	Gunmetal gray
MTX-ER-EXT-7-11	4.5 ft Frame Extension	Gunmetal gray

*Note: These extensions do not permit the mounting of additional MTX termination hardware.*



MTX Full Frame | Photo ICH280

## Ordering Information

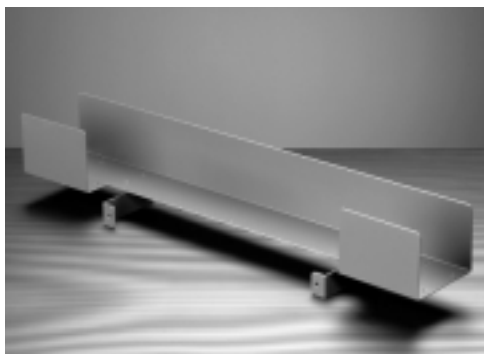
### Frame Accessories

Part Number	Description	Dimensions (H x W x D) cm (in)	Shipping Weight kg (lb)	Color
<b>MTX-RT</b>	Rear Troughs for MTX Frame (pack of six)	12.7 x 76.2 x 12.7 (5 x 30 x 5)	30 (66)	Gunmetal gray
<b>MTX-IFM-7</b>	MTX Inter-bay Fiber Manager (IFM) (rear troughs not included)	231.3 x 30.5 x 61 (84 x 12 x 24)	25 (55)	Gunmetal gray
<b>MTX-IFM-7-T</b>	MTX Inter-bay Fiber Manager (IFM) with rear trough kit (trough kit not installed)	231.3 x 30.5 x 61 (84 x 12 x 24)	34 (75)	Gunmetal gray
<b>MTX-IFM-7-RT</b>	Rear Troughs for MTX IFM (pack of six)	17.8 x 30.5 x 12.7 (7 x 12 x 5)	20 (44)	Gunmetal gray

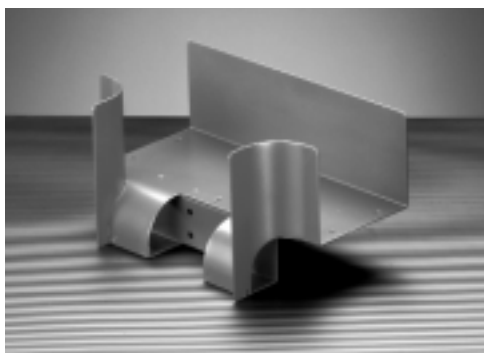
### Hardware Adapter Bracket

Converts MTX frame mounting pattern to EIA or WECO for mounting hardware or electronics typically installed in traditional equipment rack.

Part Number	Description	Dimensions (H x W x D) cm (in)	Shipping Weight kg (lb)	Color
<b>MTX-ADBKT-E</b>	EIA Mounting Hole Spacing	30.5 x 76.2 x 28 (12 x 30 x 11)	7 (15.4)	Gunmetal gray
<b>MTX-ADBKT-W</b>	WECO Mounting Hole Spacing	30.5 x 76.2 x 28 (12 x 30 x 11)	7 (15.4)	Gunmetal gray



Rear Trough for MTX Frame (MTX-RT) | Photo ICH276



Rear Trough for MTX Inter-bay  
Manager (MTX-IFM-7-RT) | Photo ICH274



Inter-bay Fiber Manager (MTX-IFM-7-T) | Photo ICH273

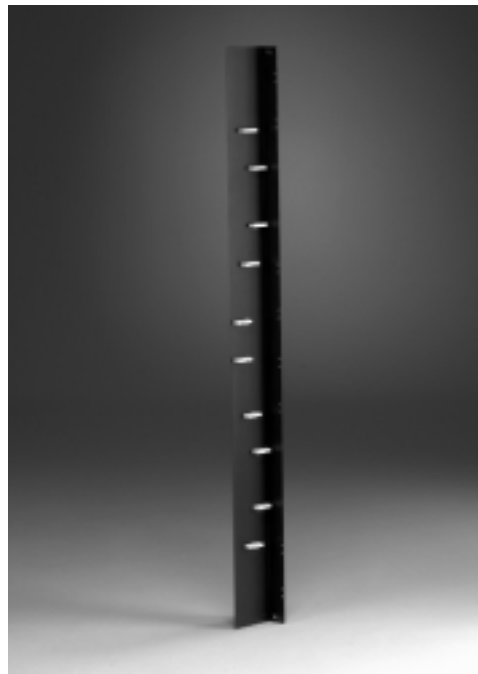
## Ordering Information

### Frame Accessories

Part Number	Description	Color
<b>MTX-IBC-7</b>	Inter-bay Jumper Channel – used when bringing in jumpers from overhead raceway into the rear of the termination modules; one unit fits either right or left side	Gunmetal gray
<b>MTX-IBC-EXT-7-9</b>	2 ft Inter-bay Jumper Channel Extension – used in conjunction with frame extensions to provide incoming jumper management up to 9 ft heights	Gunmetal gray
<b>MTX-IBC-EXT-7-11</b>	4.5 ft Inter-bay Jumper Channel Extension – used in conjunction with frame extensions to provide incoming jumper management up to 11.5 ft heights	Gunmetal gray
<b>MTX-JMPR-RG-L</b>	Left Side Incoming Jumper Routing Spool – used in conjunction with the MTX-IFM-7 when bringing in jumpers to the rear of the MTX housing (six spools and divider plates per pack)	Gunmetal gray
<b>MTX-JMPR-RG-R</b>	Right Side Incoming Jumper Routing Spool – used in conjunction with the MTX-IFM-7 when bringing in jumpers to the rear of the MTX housing (six spools and divider plates per pack)	Gunmetal gray
<b>003-601</b>	Master MTX Instructional Document	



Jumper Routing Guide (MTX-JMPR-RG-L) | Photo ICH275



Inter-bay Channel (MTX-IBC-7) | Photo ICH272