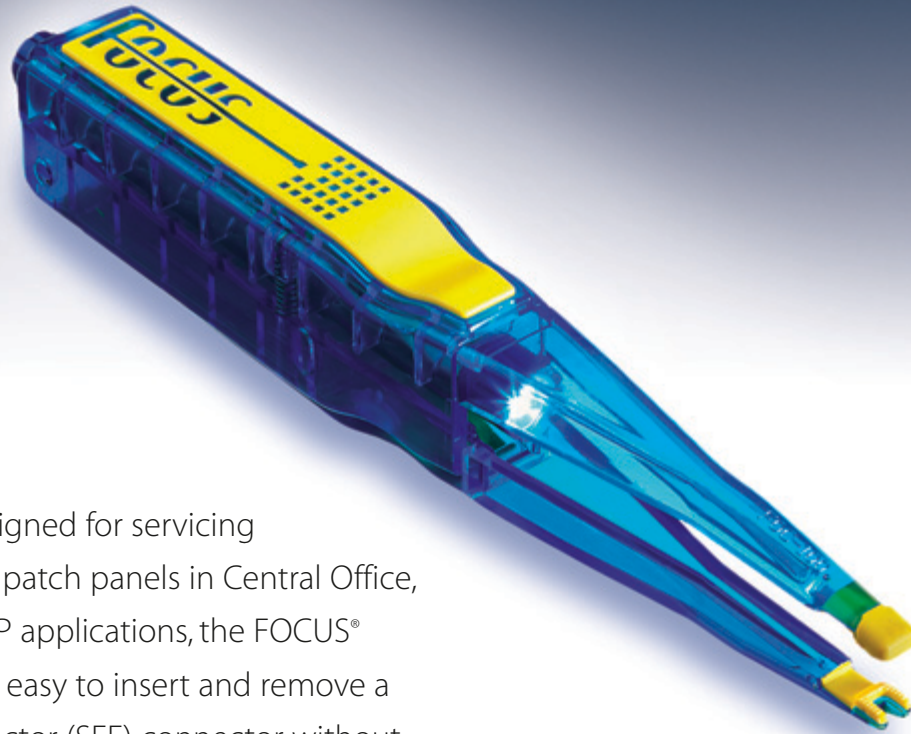


FOCUS®

FIBER OPTIC CONNECTOR UNIVERSAL SOLUTION

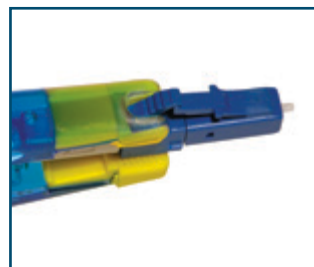


Specially designed for servicing high-density patch panels in Central Office, FTTP, and OSP applications, the FOCUS® tool makes it easy to insert and remove a small-form-factor (SFF) connector without disturbing adjacent connections.

Universal tips firmly grasp SFF connectors

THE FOCUS ADVANTAGE:

- Inserts and removes SC, SC2, MU, LC and MTRJ connectors
- Works with different cables, including 2mm, 3mm, 1.6mm, jacketed, and 900um buffered cables
- Leaves delicate fiber cables undisturbed
- Features an integrated flashlight
- Fits comfortably in either hand
- Carries a lifetime warranty on the body



Contoured notch accommodates LC connectors



An optional belt holster keeps the tool handy.

CablePrep®

FOCUS®

FIBER OPTIC CONNECTOR INSERTION AND REMOVAL TOOL

SPECIAL FEATURES:

Long, narrow jaws • The tapered spring-loaded jaws easily reach the back of patch-panel enclosures. The tool inserts and removes connectors without disturbing adjacent cables, which ensures uninterrupted service on neighboring channels and eliminates unnecessary stress on delicate fibers.

An ergonomic design • Designed for one-handed operation, the tool is comfortable to hold and easy to navigate with either hand. The tool design prevents the jaws from pinching the operator's hand.

An integrated flashlight • A removable flashlight improves visibility while navigating through a congested enclosure. The light illuminates individual ports and connectors on the panel as well as the tool tips. The two standard AAA batteries can be easily changed.

Universal tips • Made of specially formulated material, the tips of the tool provide a firm grasp on small-form-factor connectors. The jaws support the cable to keep it from bending and protect the delicate fibers within.

Contoured notch for LC connectors • During insertion of LC connectors, the notch on one tip prevents the latch from being depressed, ensuring positive latching of the connector. During removal, the straight tip depresses the latch and frees the connector from its port.

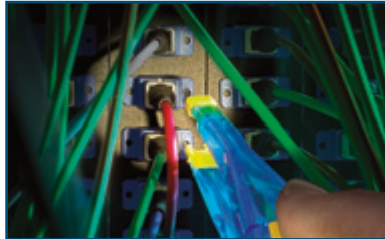
Non-locking design • The spring-loaded jaws will not lock onto the connector, thus avoiding damage to the connector and cable if the tool is dropped during use.

Ease of visibility and storage • Made of attractive bright yellow and translucent blue material, the tool is easily located if dropped or misplaced in a poorly lit environment.

Non-conducting material • The tool is made of non-conducting, dielectric plastic materials that eliminate the potential for shorts.

Equipment damage mitigation • Using the FOCUS tool ensures proper snap fits and mitigates potential damage to connector bodies, ferrule tips, sleeves, cables, and panel ports that might otherwise result from forced insertions and removals.

Durability • With the exception of an easily replaced flashlight, the tool can be dropped from a height of ten feet without damage.



ORDERING INFORMATION

Item	Order Number
Focus Tool	FOC-100
Replacement Light Assembly	FOC-RLA1
Holster	T-HLSTR

Training

An instructional video is shipped in computer CD format with each tool and is available on the Cable Prep website. The video details proper use of the tool as well as maintenance procedures.

Warranty

All Cable Prep brand tools are warranted to be free from defects in workmanship and material. The plastic FOCUS body carries a lifetime warranty.

CablePrep®
Tools You Trust Since 1979

www.cableprep.com
Toll-free: 1-800-394-4046
Phone: 1-860-526-4337
Fax: 1-860-526-2291

207 Middlesex Avenue
P. O. Box 373
Chester, CT 06412-0373
USA

© 2007, Ben Hughes Communication Products Company. Cable Prep, the Cable Prep logo, Tools You Trust, the Cable Prep Tools You Trust logo, and FOCUS are registered trademarks of Ben Hughes Communication Products Company.

Patent Pending