

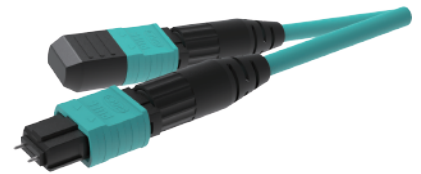


R5

Ribbon to Ribbon



ALLINONE



MPO SOC

Benefits and Features

- Remote Maintenance via Internet
- Integrated 5 Function in One Unit (Stripping, Cleaning, Cleaving, Splicing, Protecting)
- The fusion splicer with All-In-One™ system provides the best workability
- No scratches on fiber by thermal stripping
- 4.3-inch Color LCD Monitor with Touch Screen & Bidirectional Operation System
- Powerful Lithium Polymer Battery with Large Capacity
- Resistance to Shock, Dust and Water
- Built-in Dual Sleeve Heater
- Equipped with Sleeve Loader easy fiber loading for ribbon fiber



Specification

CATEGORY	DESCRIPTION
Fiber alignment	Fixed V-Groove(Clad to Clad)
Applicable type of fibers	SM(ITU-T G.652), MM(ITU-T G.651), DS(ITU-T G.653), NZDS(ITU-T G.655), ITU-T(G.657)
Fiber count	Single fiber, 2~12 fiber
Applicable fiber dimensions	Single: Cladding diameter 125 μ m, Coating diameter 250, 900 μ m Ribbon: Cladding diameter 125 μ m, Ribbon fiber thickness 0.27 to 0.32mm
Fiber setting and cleaved length	8mm
Splicing modes	Splice mode: 100, Heat mode: 50
Typical splice Loss	SM: 0.05dB, MM: 0.02dB, DS: 0.08dB, NZDS: 0.08dB
Return loss	> 60dB
Splicing time	Typical 20sec with standard SM(ITU-T G.652)
Splice loss estimate	Available
Sleeve heating time	30sec, 50sec
Applicable protection sleeve	40, 60mm(fiber)
Storage of splice result	The last 10,000 results to be stored in the internal memory.(Image 10,000 results)
Tension test	2N / 4,4N(Option)
Operating condition	Altitude: 5,000m above sea level, Temperature: -10 $^{\circ}$ C~50 $^{\circ}$ C, Humidity: 0~95%, Wind: 15m/s, non-condensing, dust proof, water proof, shock proof
Storage condition	Temperature: -40 $^{\circ}$ C~80 $^{\circ}$ C, Humidity: 0~95%
Dimension	142(W) x 225(L) x 132(H)mm(Including rubber)
Weight	2.5kg(Including battery 3.2kg)
Viewing method and display	Two CMOS cameras and 4.3-inch color LCD monitor with touch screen
Fiber view and magnification	50X
Power supply	DC Lithium polymer battery(DC 14.8V, 8400mAh), 100~240V AC Adapter
No. of splice/heating per battery full charge	320cycle
Electrode life	More than 1,000 times
Terminals	USB, External power(DC 12V Available for car cigar jack)

Standard Package

CATEGORY	MODEL	Q'ty
Arc Fusion Splicer	R5	1
AC Adapter	F1-1	1
Sleeve Loader	S312	2
Spare Electrode	EI-22	1 pair
Battery Pack	S513	1
Cooling Tray	CT-03(60mm)	1
Holder	H5-Series	1 pair
Tool Box	-	1
User Manual	-	1
Carrying Case	Hard Case	1

Option Package

CATEGORY	MODEL
Battery Pack	S513
Cleaver Blade	BI-05
Electrode	EI-22
Fiber Holder	H5-12, H5-10, H5-8, H5-6, H5-4, H5-2, H5-250, H5-900, H5-IN, H5-2.5
Sleeve	R-F40(40mm)
Sleeving Clamp	SC-01
External Power	DC 12V Available for car cigar jack

ILSINTECH KOREA

#39, Techno 3-ro, Yuseong-gu, Daejeon, Korea (Zip. 305-509)

| Tel +82 42.671.5610 | Fax +82 42.671.5612

USA 4230 LBJ Freeway, Ste.149 Dallas, TX 75244 | (+1) 972 556 0916

INDIA ILSintech Trading India Pvt.Itd 621, Devika Tower, Nehru Place New Delhi 110019 | (+91) 11 4055 5954, (+91) 11 4056 7229

CHINA Room 101 Li Ming Building, No111 Gui Qing Road Xuhui District, Shanghai, China | (+86) 21 5836 0950

RUSSIA Office 401(Kotra) 4F Hotel "Korston" 15 st. Kosygina, Moscow, Russia | (+7) 985 9111987

EUROPE Zirovnicka 2/2389 106 00 Prague 10, Prague, Czech Republic | (+420) 725 001 757

INDONESIA FACTORY Dusun 02 Blok Babakan RT01/Rw03, Desa Sukaraja Wetan, Jatiwangi, Majalengka, Jawa Barat, Indonesia