



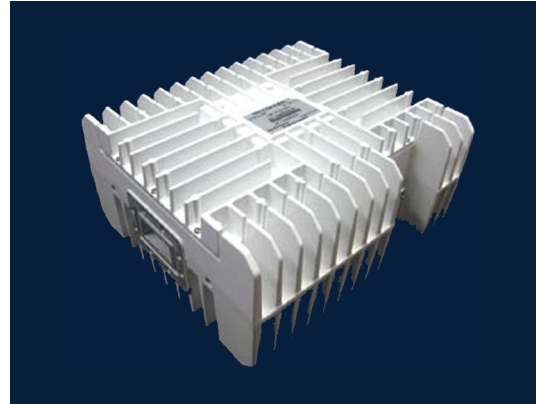
BUC

C-BAND 10W 20W

ELMTBC

ELEMENT SERIES

SPECIFICATIONS



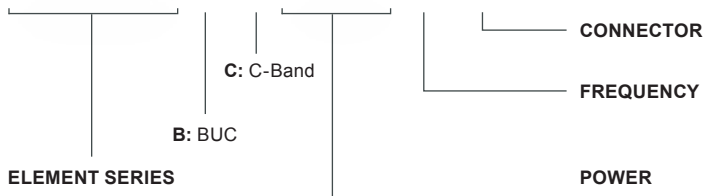
	ELMTBC010	ELMTBC020		ELMTBC010	ELMTBC020
Output Power (P1dB)	40 dBm min.	43 dBm min.	Input Voltage	+18V to +24V DC via IFL	
Output Power (P_{sat})	40.5 dBm min.	43.5 dBm min.	Power Consumption	80W max.	180W max.
Phase Noise (SSB) max.	-60 dBc/Hz at 100Hz -70 dBc/Hz at 1kHz -80 dBc/Hz at 10kHz -90 dBc/Hz at 100kHz -100 dBc/Hz at 1MHz		Input (waterproof)	Type F Connector (75 Ohm) Type N Connector (50 Ohm)	
Linear Gain	65 dB typ., 60 dB min., 70 dB max.	69 dB typ., 64 dB min., 74 dB max.	Output (waterproof)	WR-75 waveguide grooved	
Gain Flatness:	Over Full Band ≤ 4.0 dB p-p Over Any 40 MHz ≤ 1.5 dB p-p Over Temperature ≤ 4.0 dB p-p		Dimensions (L x W x H)	220 mm x 194.2 mm x 103.5 mm	220 mm x 196 mm x 136 mm
Output Spurious:	In-Band ≤ -60 dBc Out-of-Band ≤ -50 dBc		Weight	4.5 kg (9.92 lb)	5 kg (11 lb)
Noise Power Density	-80 dBm/Hz in Tx -156 dBm/Hz in Rx		Operating Temperature	-40 to +55°C	
Input VSWR	2.0 : 1 max.		Storage Temperature	-40 to +80°C	
Output VSWR	2.0 : 1 max.		Humidity	0-100% condensing	
			External Ref Freq	10 MHz (sine-wave), -5 to +5 dBm	
			Enclosed Accessories	Screws, Gasket	

FREQUENCY BANDS

	S: Standard	P: Palapa	I: Insat
Transmit Frequency (GHz)	5.850 - 6.425	6.425 - 6.725	6.725 - 7.025
L.O. Frequency (GHz)	4.90	5.275	5.75
IF Frequency (MHz)	950 - 1525	1150 - 1450	975 - 1275

HOW TO ORDER

ELMTBC010-PN



- F: Type F Connector (75 Ohm)
- N: Type N Connector (50 Ohm)
- S: Standard
- P: Palapa
- I: Insat
- 010: 10W
- 020: 20W



C-BAND 10W 20W BUC: ELMTBC

MECHANICAL DIAGRAM

