

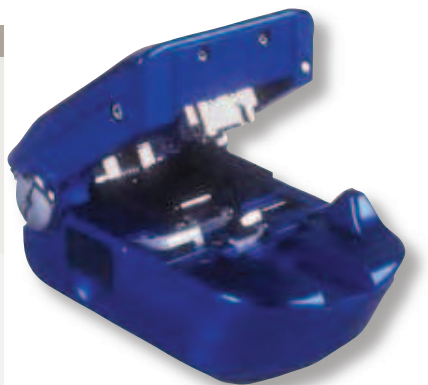
Cleavers

Optical Fiber

FC-7R Handheld Automatic Optical Fiber Cleaver



FC-7R with automatic blade rotation



FC-7 without automatic blade rotation

Description:

The FC-7 is the most versatile tool available for optical fiber cleaving. The FC-7 is ideal for use in fusion splicing, field termination, or any other precision application. It has a simple cleaving operation that can be performed in the palm of the hand, which allows the user to take the cleaver to fiber in limited slack applications. The FC-7 can perform cleaves on single fibers (0.25 to 0.90) and up to 4 count ribbons.

A built-in fiber scrap collector handles scrap fibers resulting from the cleaving process. Following a completed cleave, the lid is raised allowing the collector to automatically grab and safely store the fibers. The FC-7R includes an automatic blade rotation feature. With each cleave, the blade is automatically rotated to a new scoring position on the cleaver blade. The automatic blade rotation feature ensures that the user receives the maximum number of precision cleaves from each cleaver blade.

Features:

- FC-7R Industry's Only Optical Fiber Cleaver with Automatic Blade Rotation
- Prevents Double Scoring of Fibers
- Can Be Used for Single Fiber Cleaving or Up to 4 Count Ribbon
- Features Automatic Fiber Scrap Collection
- Can Be Operated With Minimal Steps
- Works With Sumitomo Fiber Holders
- Rugged Aluminum Alloy Outer Housing

Specifications

Dimensions	98W x 47D x 58H mm
Weight	300 g
Coating Diameters	0.25-0.9mm (Single) 0.25mm (Ribbon)
Cladding Diameter	0.125mm
Cleave Lengths	6-20mm (Single Fiber) 10-20mm (Ribbon)
Typical Cleave Angle	0.5 Degrees
Maximum Blade Life	36,000 Fiber Cleaves
Number of Steps for Cleave	1
Automatic Scrap Collection	Included

Ordering Information

Description	Part Number
Cleaver (Up to 4 ct. Ribbon)	FC-7
Automatic Blade Rotation Cleaver	FC-7R

Accessories

Description	Part Number	UOM
Cleaver Blade	FCP-BL	1 ea.
Cleaver Blade for FC-7R	FCB-BL-R	1 ea.