



PREFORMED LINE PRODUCTS
The connection you can count on.

COYOTE[®] MPC (Multi-Purpose Closure) PRODUCT OPTIONS & ACCESSORIES



COMMUNICATIONS



ENERGY



SPECIAL INDUSTRIES



SOLAR

COYOTE[®] FIBER OPTICS





PLP Fiber Optic Products

COYOTE® MPC (Multi-Purpose Closure)

The COYOTE MPC is the latest product to the COYOTE Fiber Optics family to focus on the MDU environment. The new closure system provides a flexible platform to address the multitude of applications that exist in residential and commercial FTTx installations. The closure's styled exterior and neutral color allow it to blend with the surroundings but, good looks aren't everything, as the MPC is also highly functional.

The MPC is constructed of durable, UV stabilized, flame retardant (UL 94-5VA) polymer to permit interior or exterior applications. Eight cable entrance ports around the closure exterior accept an easy-to-use grommet system and standard commercially available fittings. The closure's interior can be configured to address slack storage, splicing, cross connect, hardened adapter applications or any combination. Pre-terminated configurations are also available to minimize the amount of labor required during your installation.

The MPC is tested in accordance to elements of the Telcordia GR-771-CORE specification and offers NEMA4 performance. The MPC is manufactured in accordance with ISO 9001:2000 procedures to assure quality and is backed by the experience and field support that PLP has been noted for since 1947.

FEATURES

- Size: 16" L x 14" W x 4" D (41cm x 36cm x 10cm)
- 8 Cable entrance ports around closure exterior
- Cable entrance ports are sized to accept PLP grommet adapter ports or commercially available fittings
- Easy to use grommet system – 7 different multi and single hole grommets to choose from
- Constructed with UL 94 5VA polymer compounds to provide the highest flame resistant rating
- Interior grid hole pattern allows custom organization to address your specific application
- Integrated rubber seal eliminates water entry
- Custom logo plaques available to identify your company logo – contact your PLP representative for further details



Grommet Port Adapter



Storage Brackets



MPC with OptiTap® Adapters



COYOTE MPC Kits

Catalog Number	Description
COY MPC-001	COYOTE MPC Standard – includes (1) 4 Hole Grommet Port Adapter Kit (8003812), (1) Organizer Clip Kit (8003813)
COY MPC-002	COYOTE MPC with OptiTap® adapters – includes (1) 4 Hole Grommet Port Adapter Kit (8003812), (1) 8 Hole Grommet Port Adapter Kit (8003818), (1) bulkhead w/2 OptiTap Adapters, (1) Organizer Clip Kit (8003813), (1) Storage Bracket Kit (8003811), (1) Adapter Shroud
COY MPC-003	COYOTE MPC Standard w/Step Grommets – includes (1) Step Grommet Kit (80808618), (2) Organizer Clip Kits (8003813)

COYOTE MPC Accessories

Catalog Number	Description
8003813	Organizer Clip Kit – contains 3 clips
8003811	Storage Bracket Kit – contains 2 brackets
8003814	MPC Splice Platform Kit for Single Fusion – includes 3 splice blocks
8003794	MPC Splice Platform Kit for Ribbon – includes 3 splice blocks
8003829	Cable Restraint Bracket Kit – includes 1 restraint bracket
80808467	Raceway Shroud Kit – includes 1 shroud
8003824	8 Port Internal OptiTap® Bracket Kit – does not include adapters
LGSBS8-5	LITE-GRIP® Splice Block Kit for Single Fusion – accepts 8 splice protectors per block – 5 pcs per kit
LGSBR3-5	LITE-GRIP Splice Block Kit for Ribbon (Mass Fusion) – accepts 3 mass fusion protectors per block – 5 pcs per kit



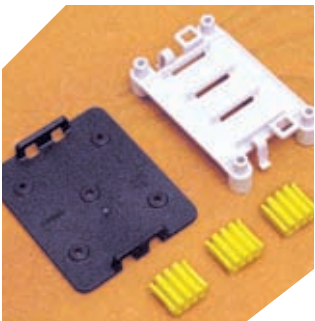
Deep Design
Available September 2008



Cable Storage Brackets



Organizer Clips



Splice Platform
for Single Fusion

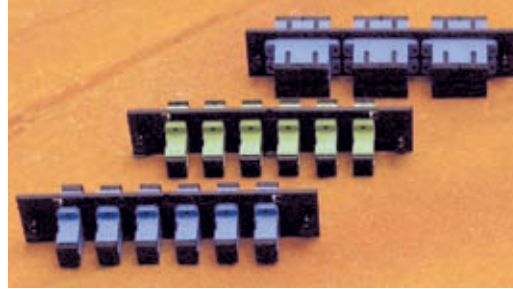
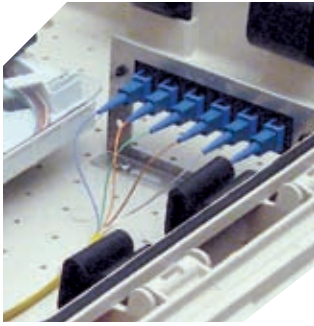
PLP Fiber Optic Products COYOTE® MPC (Multi-Purpose Closure)

COYOTE Silicone Grommet Kits			
Part Number	Cable Range	Description	Grommets
8003825	.825" - 1" (21mm-25mm)	1 Hole Grommet Port Adapter Kit	
8003826	.60" - .825" (15mm-21mm)	1 Hole Grommet Port Adapter Kit	
8003827	.40" - .60" (10mm-15mm)	1 Hole Grommet Port Adapter Kit	
8003828	.275" - .500" (7mm-12mm)	2 Hole Grommet Port Adapter Kit	
8003812	.120" - .275" (3mm-7mm)	4 Hole Grommet Port Adapter Kit	
8003818	.120" - .200" (3mm-5mm)	8 Hole Grommet Port Adapter Kit	
80808618	.070" - 1.00" (1.8mm-25mm)	Stepped Grommet Kit	

MPC Splice Tray Kit Options			
	4 Trays 48 Max Splice Count		2 Trays 144 Max Splice Count
Low Profile Tray (12 splice count) Cat. #80807701 (w/splice blocks) or #8001130 (blank)		Ribbon Tray (72 splice count) Cat. # 80807114 (w/splice block) or 80808160 (blank)	
	4 Trays 96 Max Splice Count ¹		2 Trays 80 Max Splice Count ¹
24 Count Low Profile Tray (24 splice count) Cat. #8003468 (w/splice blocks)		LITE-GRIP™ Short Tray2 (40 splice count) Cat. #LGSTS16 (single fusion)	
	3 Trays 36 Max Splice Count		2 Tray 288 Max Splice Count
Standard Tray (12 splice count) Cat. #80806033 (w/splice block) or 80806182 (blank)		LITE-GRIP Short Tray (144 splice count) Cat. # LGSTR144 (mass fusion ribbon)	

¹Each tray (Cat. # LGSTS16) is provided with splice blocks to support 16 single fusion splices. Splice Block Kit (Cat. # LGSBS8-5) is required for each tray to achieve maximum splice count.

PLP Fiber Optic Products
COYOTE® MPC (Multi-Purpose Closure)



Adapter Modules

Modular Plates fit any COYOTE cabinet and offer the ultimate in design flexibility.

- 6-port, 8-port and 12-port snap-in Adapter Plates
- Precision ceramic alignment sleeves

Adapter Modules			
Catalog Number	Connector	Adapters	Sleeve
6SMSC	SC	6	Ceramic
6SCAPC	SC/APC	6	Ceramic
12SMDSC	SC	12 (6 Duplex)	Ceramic
8SMSC	SC	8	Ceramic
6SMST	ST	6	Ceramic
8SMST	ST	8	Ceramic
6SMFC	FC	6	Ceramic
8SMFC	FC	8	Ceramic
6FCAPC	FC/APC	6	Ceramic
6SMLC	LC	6	Ceramic
12SMLC	LC	12 (6 Duplex)	Ceramic
600	Blank Plate	–	–

Pigtail Cable Assemblies

- Six or twelve color-coded 900 Micron SM fiber bundles, in yellow braided sleeve
- Ribbon fan outs
- Jacketed cable stubs also available

Pigtail Cable Assemblies – Bundled 900 Micron Fibers in Yellow Sleeve		
Catalog Number	Connector	Fiber Count
P6SCU_*	SC/UPC	6
P12SCU_*	SC/UPC	12
P6SCA_*	SC/APC	6
P12SCA_*	SC/APC	12
P6ST_*	ST	6
P12ST_*	ST	12
P6FC_*	FC	6
P12FC_*	FC	12
P6LC_*	LC	6
P12LC_*	LC	12

*Cable length in meters
 Contact PLP for additional options

Use the following approach to define the part number required for your COYOTE MPC Pre-Terminated Cabinet.



Adapter quantity

Type of adapter
(See table above)

3 defines a 3m pigtail ASM to match the adapter type and quantity. N defines no pigtails

Unique number to define assembly with your custom selected accessories

Contact PLP to determine if a specification has already been defined for your configuration prior to placing your order.



World Headquarters
 660 Beta Drive
 Cleveland, Ohio 44143

Mailing Address:
 P.O. Box 91129
 Cleveland, Ohio 44101

Telephone: 440.461.5200
 Fax: 440.442.8816

Web Site: www.preformed.com
 E-mail: inquiries@preformed.com