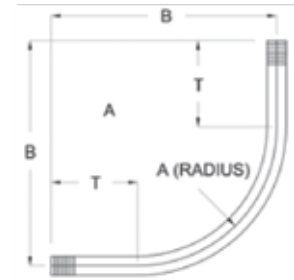




File No. E226472

GALVANIZED RIGID FACTORY ELBOWS

- Dimensional data is for reference only
- NPT thread with end-cap on each end
- Available in GRC, Aluminum, PVC Coated and Stainless Steel
- Galvanized Rigid Elbows meet UL6 and ANSI C80.1
- Aluminum Rigid Elbows meet UL6A and ANSI C80.5
- Stainless Steel Rigid Elbows meet UL6A



90° ELBOWS

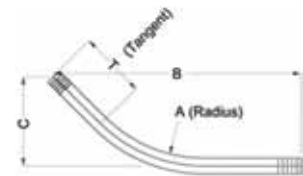
Description	Weight Each	Box Qty.	Dimensions			Cut Length
			A	B	T	
1/2" X 90°	1.0	50	4.0	6.9	2.9	12.0
3/4" X 90°	1.3	50	4.5	7.4	2.9	12.9
1" X 90°	2.1	25	5.8	8.7	3.0	15.0
1-1/4" X 90°	3.4	20	7.3	10.6	3.3	18.0
1-1/2" X 90°	4.8	15	8.3	11.9	3.6	20.3
2" X 90°	7.3	10	9.5	13.8	4.3	23.4
2-1/2" X 90°	13.9	50	10.5	15.8	5.3	27.0
3" X 90°	21.3	35	13.0	18.8	5.8	32.0
3-1/2" X 90°	27.0	35	15.0	21.8	6.8	37.0
4" X 90°	36.8	35	16.0	23.1	7.1	39.3
5" X 90°	70.0	bulk	24.0	35.2	11.2	60.0
6" X 90°	111.8	bulk	30.0	42.6	12.6	72.3

Dimensions listed in inches unless otherwise noted.

45° ELBOWS

Description	Weight Each	Box Qty.	Dimensions				Cut Length
			A	B	C	T	
1/2" X 45°	0.7	50	4.0	7.0	2.9	1.9	8.0
3/4" X 45°	0.9	50	4.5	7.4	3.0	2.0	9.0
1" X 45°	1.6	25	5.8	9.5	4.0	2.7	10.0
1-1/4" X 45°	2.9	20	7.3	13.1	5.4	4.3	15.5
1-1/2" X 45°	3.8	15	8.3	14.0	5.8	4.3	16.5
2" X 45°	5.4	10	9.5	16.1	6.6	5.4	18.5
2-1/2" X 45°	10.8	50	10.5	19.0	7.9	6.8	22.5
3" X 45°	14.7	35	13.0	20.5	8.5	6.7	23.5
3-1/2" X 45°	19.5	35	15.0	22.8	9.5	7.1	26.0
4" X 45°	29.3	35	16.0	29.2	12.1	10.5	33.5
5" X 45°	50.2	bulk	24.0	36.1	15.0	11.2	43.0
6" X 45°	77.6	bulk	30.0	42.9	17.8	12.8	48.0

Dimensions listed in inches unless otherwise noted.



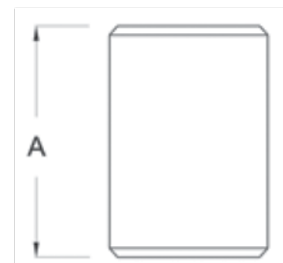
GALVANIZED RIGID COUPLINGS

- Dimensions listed in inches unless otherwise noted
- Couplings manufactured to UL specifications



File No. E226472

Size	Weight Each	Box Qty.	A Length
1/2"	0.12	100	1.63
3/4"	0.17	50	1.64
1"	0.29	30	1.97
1-1/4"	0.38	25	2.03
1-1/2"	0.53	25	2.06
2"	0.70	20	2.13
2-1/2"	1.80	24	2.19
3"	2.26	16	3.31
3-1/2"	3.50	12	3.41
4"	3.13	10	3.52
5"	4.75	5	3.95
6"	7.65	3	4.25



Part Number Ordering Matrix Begins On Page 90