

PORTABLE • ADAPTABLE • DURABLE

## CableTable THE PORTABLE WORK TABLE MADE FOR OUTSIDE PLANT

Durable and portable, fold-flat work tables deliver the perfect work surface for outside plant tech workers, installers, fiber splicers, and cable maintenance and repair technicians.



### ALL CABLETABLES FEATURE

- **Instant set up and take down**
  - Unfold and deploy in seconds for work that's safe, comfortable and efficient
- **Matte Black Work Top**
  - For high-contrast fiber visibility
- **High strength, low weight steel tube construction** - Outside Plant toughness
- **High quality "Powder Coat" Finish**
  - No rust, easy cleanup, durability
- **Fold flat design**
  - Stores out of the way in truck, van or trailer
- **Rounded Corners**
  - Prevents cable damage from snagging or grabbing

MADE IN THE  
**USA**



### CT-36\*

- Hook and loop cable control strip
- Matte Black Work Surface: 28" x 22"
- Working Height: 28"
- Folded Dimensions: 36" x 22" x 2.75"
- Weight: 24 lbs.
- Corner clamps for accessories or alternative leg mounts



### CT-53\*

- Hook and loop cable control strip
- T-Bar (included)
- Reversible leg extensions (included)
- Matte Black Work Surface: 44" x 22"
- Working Height: 29" or 36"
- Folded Dimensions: 53" x 22" x 2.75"
- Weight: 33 lbs.
- Corner clamps for accessories or alternative leg mounts



### CT-70\*

- Hook and loop cable control strip
- T-Bar (included)
- Reversible leg extensions (included)
- Matte Black Work Surface: 58" x 22"
- Working Height: 29" or 36"
- Folded Dimensions: 70" x 22" x 1.5"
- Weight: 39 lbs.
- Corner clamps for accessories or alternative leg mounts



\*Cable Tables shown with optional CL-100 light and CL-200 magnifier, sold separately.



**A CORNER CLAMPS** – Accommodate additional accessories or mounting 5/8" Ground Rods as alternative legs for stable, level set up at virtually any work site



**B T-BAR** – Keeps buffer tubes elevated, captured, safe and clean during splicing, and closure installation (Included with CT-53 & CT-70 Tables)



**C HOOK AND LOOP CABLE CONTROL STRIP** – Secures small cables and buffer tubes organized and in place while working



**D LEG EXTENSIONS** – Increase table height while penetrating soil tip aids outdoor leveling and stability. Opposite rounded tip is perfect for use on floors. (Included with CT-53 and CT-70 Tables. Available option on CT-36)

# CableTable Flex-Arm Accessories

Adaptable, quick-mount, flex-arm accessories are designed to enhance any CableTable, improving comfort, effectiveness, and efficiency.



## CTAK CABLETABLE ACCESSORY KIT

Kit comes in a compact, durable, soft-sided carrying case to keep everything clean, well-organized and undamaged.

### CTAK ACCESSORY KIT CONTAINS THE FOLLOWING:

- CL-100 24" Flex-Arm Light with Quick-Connect Clamp
- CL-200 24" Flex-Arm 2x Magnifier with Quick-Connect Clamp
- CL-500 Universal Cable Clamp



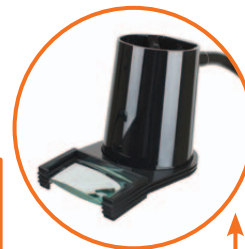
### CL-100 CORDED LIGHT WITH FLEX ARM

- Includes 24" Flex Arm and Quick-Connect Mounting Clamp
- Accepts standard light bulb — light, right where you need it
- Cool to the touch housing — reposition easily
- Heavy-duty 10-foot cord



### CL-200 MAGNIFIER LENS WITH FLEX ARM

- 2x Magnification with 4x spot — perfect for fiber optic work
- Includes 24" Flex Arm and Quick-Connect Mounting Clamp



### CL-300 ADD-ON MAGNIFIER

- Adds magnification to the CL-100 Light (Attaches to CL-100 Housing)
- 2x Magnification with 4x spot — perfect for fiber optic work



### QUICK-CONNECT MOUNTING CLAMP

- Both the CL-100 and CL-200 include our unique, quick-connect mounting clamp that allows you to leave the clamp in place on the table while quickly removing the Flex-Arm accessory for storage. No repositioning required.
- Mounted Flex-Arm also rotates easily for swing-out-of-way adjustment and return

Clamp-on Mounting base comes standard with CL-100 & CL-200





## More CableTable Accessories



### CT-500 UNIVERSAL CABLE CLAMP

- Clamp secures up to two cables firmly in place while working (Holds one or two cables 3/8" to 7/8" in diameter)
- Mounts solidly to the CableTable either horizontally (cables parallel to table surface) or vertically (cables perpendicular to table surface) for maximum adaptability
- Same rugged clamp design as our lamps and magnifiers

CT-500 Universal Clamp in horizontal and vertical applications



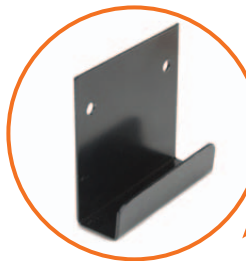
### CABLETABLE TOTE BAGS

- Rugged storage/carrying bag for the CT-36 (CT-3600) and CT-53 (CT-5300) CableTables
- Keeps tables protected, clean and ready for use
- Handles made of 2" Nylon webbing for "one hand" portability
- Constructed of Super-tough Cordura 100 Fabric
- Heavy Duty Zipper lasts and lasts



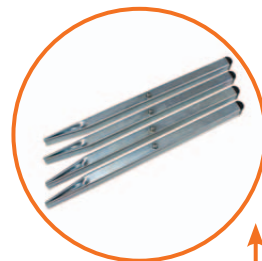
### CT-TB T-BAR FIXTURE

- Keeps fiber buffer tubes and cables elevated, clean and captured during work
- Ideal for "High Fiber Count" and "Hot Cut" splicing applications
- T-Bar is included with all CT-53 and CT-70 Tables



### CT-HB HANGER BRACKET

- Hanger Bracket screws easily onto the wall of your truck, van, trailer or warehouse for out-of-the-way storage of any CableTable model



### CT-LE LEG EXTENSIONS

- Available as an optional add-on for CT-36 CableTables (Leg Extensions come standard on all CT-53 and CT-70 Tables)
- Reversible: Pointed-tip penetrates soil to aid outdoor leveling and stability. Rounded plastic tip on opposite end is perfect for use on floors and hard surfaces
- Increases Table Height by 7"