

1. PRODUCT SUMMARY

The Primex Hurricane Clip is a durable, multi-purpose accessory that provides quick, secure installation and management of drop cable.

The clip is easily flush-mounted on any Primex fiber or Media Distribution Enclosure, and adaptable to a range of other applications.

It can securely hold up to 30' of standard fiber drop cable with a transition point for the fiber.

2. PRODUCT DIMENSIONS

H: 2.2" / W: 4.5" / D: 1.8"

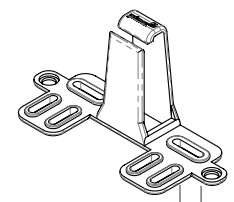
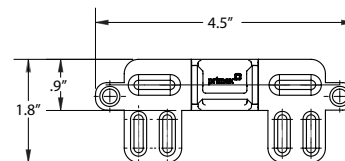
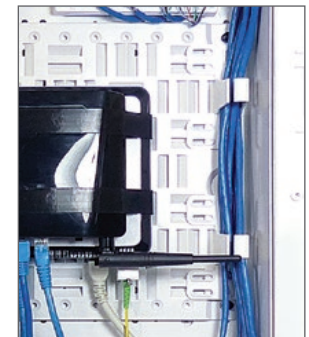
3. FEATURES & BENEFITS

- Mounting hole pattern provides quick and easy installation.
- Securely holds 30' of hardened drop cable.*
- Break off tabs provide a smaller footprint within the box.
- Easily flush-mounted against enclosure walls to maximize workable space.
- Adaptable to a range of applications.
- Available in PVC for outdoor or ABS for indoor applications.

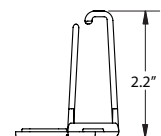
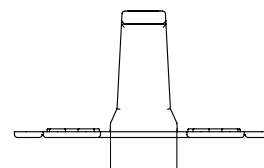
*Depending upon enclosure model.

4. CONFIGURATIONS

SC	Description
125-0239	White ABS fiber clip



Break off tabs (TYP)



FOR MORE INFORMATION CONTACT:

20160 92A Avenue Langley BC V1M 3A4 Canada
 ☎ 1.604.881.7875 ☎ 1.877.881.7875 ✉ info@primexfits.com