

GuideBuilder[®] 5

EPG System for Cable TV

Cable operators today need to provide timely and accurate electronic program guides for clear-QAM tuners, non-decrypting and DVB-SI set-top boxes, and MDU installations. That's why they need GuideBuilder 5, the fifth-generation of the leading EPG metadata system from Triveni Digital.

Generate guides for clear-QAM and DVB-SI

GuideBuilder 5 automatically ingests program schedules from multiple listing services, generates standards-compliant PSIP and DVB-SI metadata, and seamlessly outputs EPGs for thousands of channels and services.

With GuideBuilder 5, it's easy to configure your channel lineups, view and edit program descriptions, set up email alerts and SNMP traps, manage user access, and more. This state-of-the-art metadata management system speeds deployments, streamlines workflows, and saves valuable time for other responsibilities.

Manage all your channels and services

For more than a decade, GuideBuilder has been the industry leader in EPG metadata management. The new GuideBuilder 5 builds on that field-proven reputation for usability and reliability with a simplified web-based GUI, a modernized Linux-based operating system, and significant performance improvements.

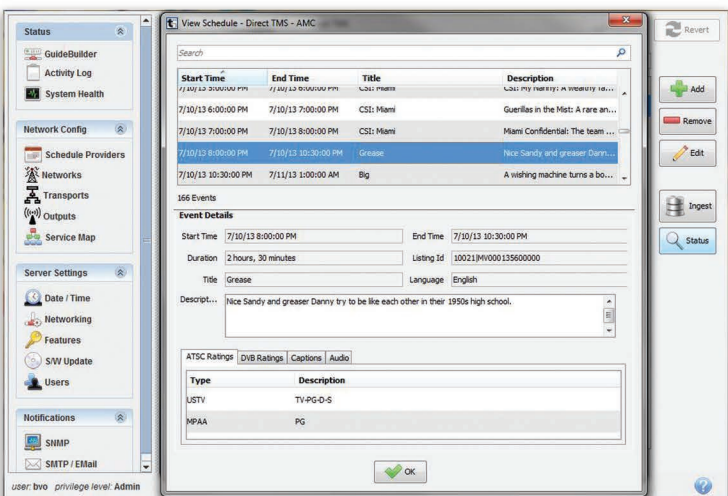
With easy software updates, a variety of licensed features, and cost-effective cloudbased and software-only options, GuideBuilder 5 sets the stage for future metadata extensions. Contact Triveni Digital for more information, product demonstrations, and price quotes.



More Channels
Clear QAM EPG
DVB-SI DTA EPG

Benefits

- Compliant channel part numbers
- Automatic schedule downloads from multiple listing services
- Generate PSIP and DVB-SI metadata
- Output program guides for clear-QAM, DVB-SI, and MDU customers
- Configure DVB-SI table, AC3 audio, and UDP output settings
- Edit program descriptions, ratings, caption, and language settings
- Send notifications via email and SMS alerts, and SNMP traps
- Import channel lineups for easy configuration
- Monitor input-to-output status with color-coded service maps
- Available in integrated server and software-only options



GuideBuilder 5 generates PSIP and DVB-SI metadata in one, easy-to-use system.



GuideBuilder[®] 5

EPG System for Cable TV

Solves common EPG problems

Clear-QAM EPGs

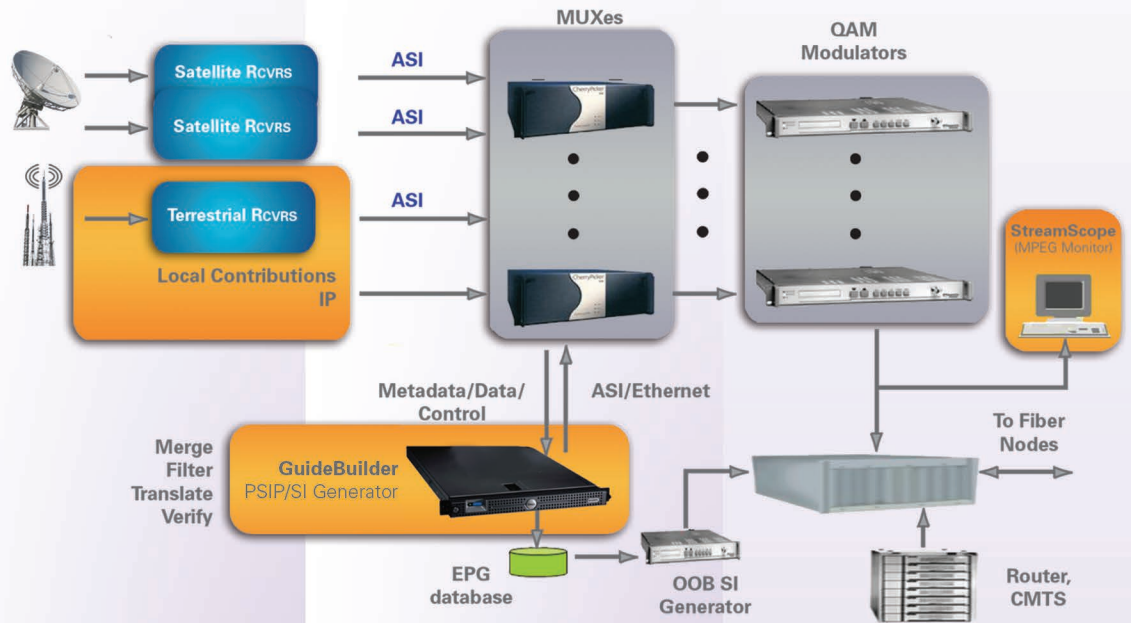
- Provide channel branding and extended program guides to built-in clear-QAM tuners or non-decrypting DTAs. Virtual channel remapping ensures the same channel numbers with or without set-top boxes.

DTA EPGs

- Generate standards-compliant DVB-SI metadata to meet EPG needs of customers with DVB-SI set-top boxes.

MDU Installations

- Provide customized EPGs for hotels, hospitals, dormitories, and other multiple dwelling unit installations.



The screenshot shows the 'Edit DVB-Cable Network - WESTSTAR' window. The 'Default Delivery Settings' tab is active. The 'DVB Channels' section contains a table with the following data:

Name	Frequency (MHz)	Original Network ID	Number of Services	Linked Transport
TX01_369MHz	369.0	1	8	Transport Stream1
TX02_381MHz	381.0	1	8	Transport Stream2
TX03_321MHz	321.0	1	8	Transport Stream3
TX04_333MHz	333.0	1	9	Transport Stream4
TX05_345MHz	345.0	1	9	Transport Stream5
TX06_357MHz	357.0	1	8	Transport Stream6
TX07_315MHz	315.0	1	9	Transport Stream7
TX08_393MHz	393.0	1	10	Transport Stream8
TX09_405MHz	405.0	1	8	Transport Stream9
TX10_291MHz	291.0	1	10	Transport Stream10
TX11_363MHz	363.0	1	8	Transport Stream11
TX12_303MHz	303.0	1	8	Transport Stream12
TX13_387MHz	387.0	1	4	Transport Stream13
TX14_279MHz	279.0	1	4	Transport Stream14

The GuideBuilder 5 metadata generator can support thousands of CATV services.

Triveni Digital, Inc.
40 Washington Road
Princeton Junction, NJ 08550
609.716.3535 | t
609.716.3503 | f

triveni
DIGITAL

