

NetTool™ Series II Inline Network Tester

Helpful Hints

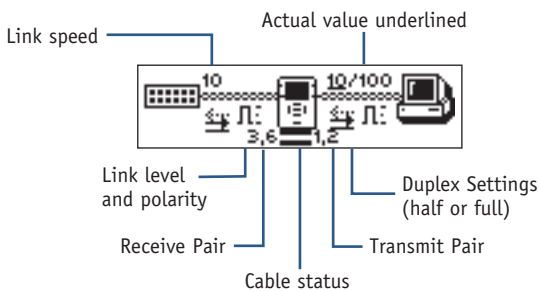
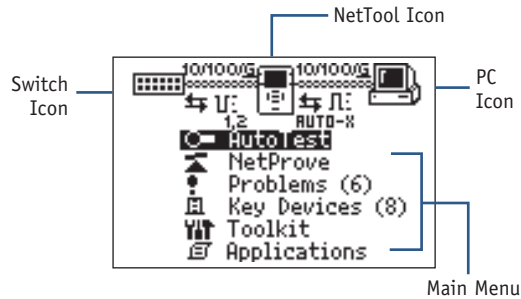
Starting Up:

- Plug NetTool Series II into a wall plate or inline between two devices like a switch and a PC, IP Phone or Access Point, with the network on the left RJ-45.
- Press the green *Power* button firmly for one second to turn NetTool on. You will see the following screen:



AutoTest:

- Press Select to begin the AutoTest.
- NetTool listens to the network traffic and displays information about PC and link configuration, network health, key devices, problems, and more.



Buttons and Indicators:



Navigation Keys:

- The Navigation Keys allow you to access all of the NetTool functions.
- Press the Navigation Keys to scroll to any menu item (including the NetTool, Switch and PC icons) and press Select.

Tip: You can exit out of many screens by scrolling to the and pressing Select.

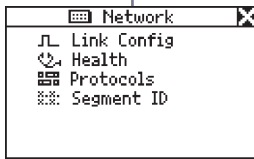
NetTool Series II Setup:

- Press up arrow key to highlight the NetTool icon.
- Press Select to access NetTool setup.
- Use the Navigation Keys to view and change any of the Settings preferences.

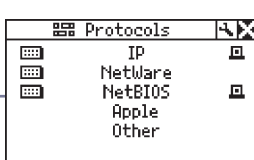
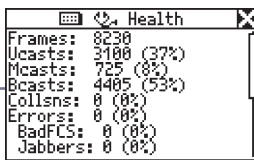
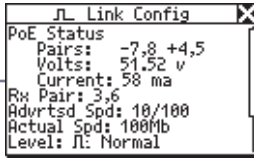


Active Networking Testing Icons

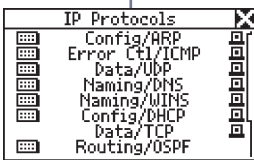
Select the Network Icon



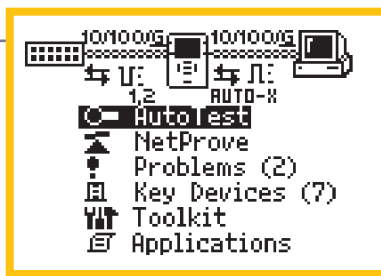
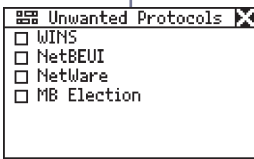
Select Menu Items For Vision Into the Network



Select Protocol



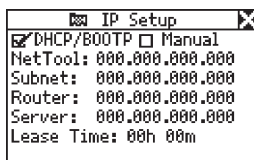
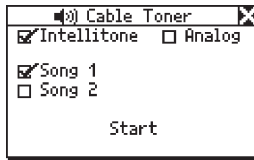
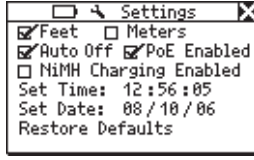
Select Tool Icon



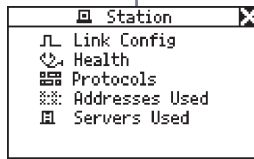
Select the NetTool Icon



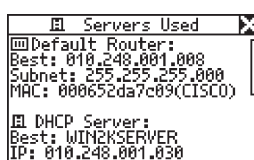
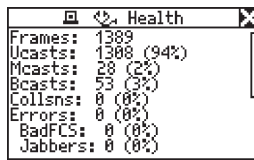
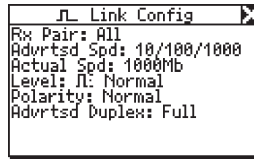
Select Menu Items To Configure NetTool



Select the PC Icon



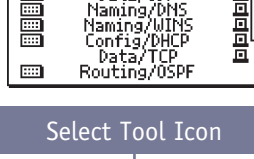
Select Menu Items For Vision Into the Device



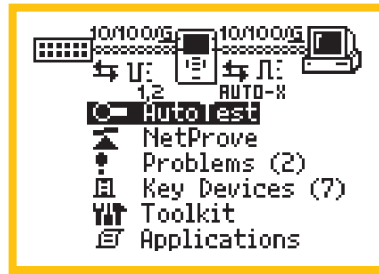
Select Protocol



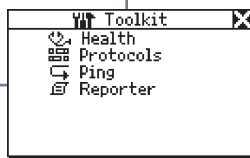
Select Tool Icon



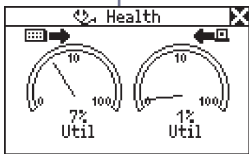
Active Network Testing Menu



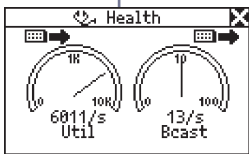
Select Toolkit



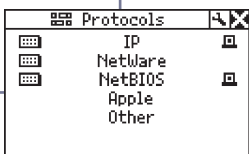
Select Health



Change Direction, Units, Or Metric



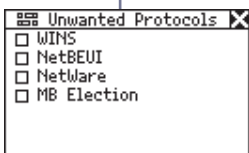
Select Protocols



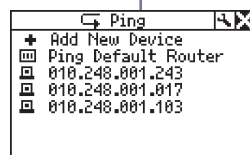
Select Protocol



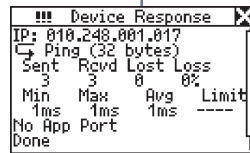
Select Tool Icon



Select Ping If Single-Ended



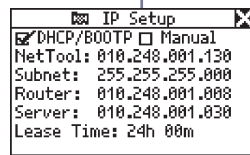
Select Device



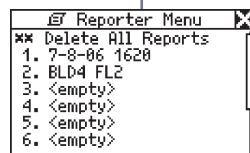
Add Device



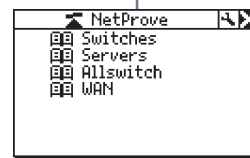
Select Tool Icon



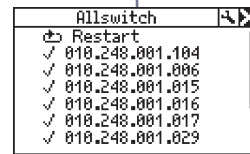
Select Reporter



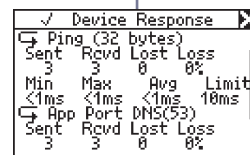
Select NetProbe If Single-Ended



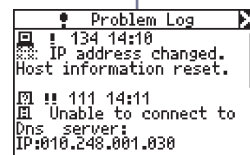
Select Catalog



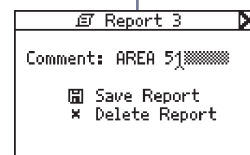
Select Device



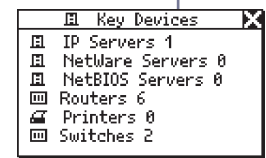
Select Problems



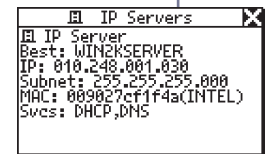
Save Report



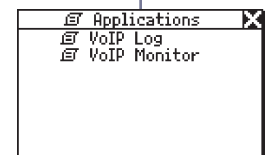
Select Key Devices



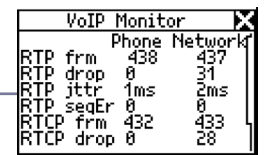
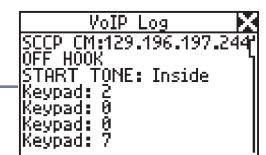
Select Device Type



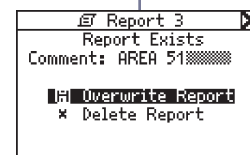
Select Applications



Select Menu Item

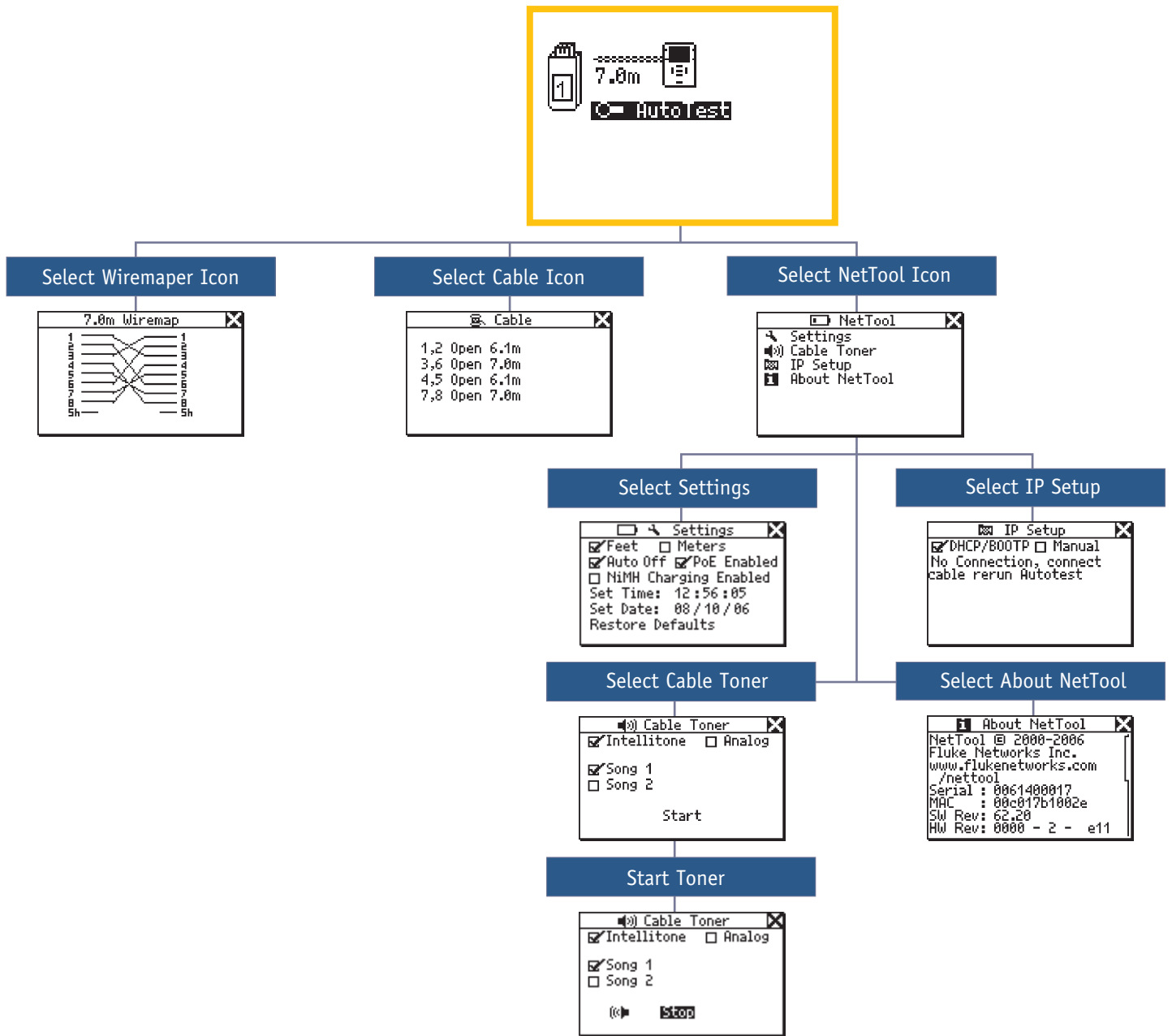


Overwrite Report





Cable Infrastructure Testing



NETWORK SUPERVISION

Fluke Networks
P.O. Box 777, Everett, WA USA 98206-0777

Fluke Networks operates in more than 50 countries worldwide. To find your local office contact details, go to www.flukenetworks.com/contact.

©2006 Fluke Corporation. All rights reserved.
Printed in U.S.A. 10/2006 1590436 D-ENG-N Rev D